



*Treasury Metals  
Revised EIS Report  
Goliath Gold Project  
April 2018*



## **APPENDIX FF**

### **PHOTO RECORD OF THE GOLIATH GOLD PROJECT**

## NOTE TO READER APPENDIX FF

In April 2015, Treasury Metals submitted an Environmental Impact Statement (EIS) for the proposed Goliath Gold Project (the Project) to the Canadian Environmental Assessment Agency (the Agency) for consideration under the Canadian Environmental Assessment Act (CEAA), 2012. The Agency reviewed the submission and informed Treasury Metals that the requirements of the EIS Guidelines for the Project were met and that the Agency would begin its technical review of the submission. In June 2015, the Agency issued a series of information requests to Treasury Metals regarding the EIS and supporting appendices (referred to herein as the Round 1 information requests). The Round 1 information requests included questions from the Agency, other federal and provincial reviewers, and members of Indigenous communities, as well as interested stakeholders. As part of the Round 1 information request process, the Agency requested that Treasury Metals consolidate the responses to the information requests into a revised EIS for the Project.

Appendix FF to the revised EIS (Photo Record Of The Goliath Gold Project) presents photos taken of the Project office and associated infrastructure, mine site area and baseline conditions. No changes have been made to this appendix from the original EIS issued in April 2015.

As part of the process to revise the EIS, Treasury Metals has undertaken a review of the status for the various appendices. The status of each appendix to the revised EIS has been classified as one of the following:

- **Unchanged:** The appendix remains unchanged from the original EIS, and has been re-issued as part revised EIS.
- **Minor Changes:** The appendix remains relatively unchanged from the original EIS, and has been re-issued with relevant clarification.
- **Major Revisions:** The appendix has been substantially changed from the original EIS. A re-written appendix has been issued as part of the revised EIS.
- **Superseded:** The appendix is no longer required to support the EIS. The information in the original appendix has been replaced by information provided in a new appendix prepared to support the revised EIS.
- **New:** This is a new appendix prepared to support the revised EIS.

The following table provides a listing of the appendices to the revised EIS, along with a listing of the status of each appendix and their description.

List of Appendices to the Revised EIS		
Appendix	Status	Description
Appendix A	Major Revisions	Table of Concordance
Appendix B	Unchanged	Optimization Study
Appendix C	Unchanged	Mining Study
Appendix D	Major Revisions	Tailings Storage Facility
Appendix E	Minor Changes	Traffic Study
Appendix F	Major Revisions	Water Management Plan
Appendix G	Superseded	Environmental Baseline
Appendix H	Minor Changes	Acoustic Environment Study
Appendix I	Unchanged	Light Environment Study
Appendix J	Minor Changes	Air Quality Study
Appendix K	Minor Changes	Geochemistry
Appendix L	Superseded	Geochemical Modelling
Appendix M	Minor Changes	Hydrogeology
Appendix N	Unchanged	Surface Hydrology
Appendix O	Superseded	Hydrologic Modeling
Appendix P	Unchanged	Aquatics DST
Appendix Q	Major Revisions	Fisheries and Habitat
Appendix R	Major Revisions	Terrestrial
Appendix S	Major Revisions	Wetlands
Appendix T	Unchanged	Socio-Economic
Appendix U	Minor Changes	Heritage Resources
Appendix V	Major Revisions	Public Engagement
Appendix W	Unchanged	Screening Level Risk Assessment
Appendix X	Major Revisions	Alternatives Assessment Matrix
Appendix Y	Unchanged	EIS Guidelines
Appendix Z	Unchanged	TML Corporate Policies
Appendix AA	Major Revisions	List of Mineral Claims
Appendix BB	Unchanged	Preliminary Economic Assessment
Appendix CC	Unchanged	Mining, Dynamic And Dependable For Ontario's Future
Appendix DD	Major Revisions	Indigenous Engagement Report
Appendix EE	Unchanged	Country Foods Assessment
<b>Appendix FF</b>	<b>Unchanged</b>	<b>Photo Record Of The Goliath Gold Project</b>
Appendix GG	Minor Changes	TSF Failure Modelling
Appendix HH	Unchanged	Failure Modes And Effects Analysis
Appendix II	Major Revisions	Draft Fisheries Compensation Strategy and Plans
Appendix JJ	New	Water Report
Appendix KK	New	Conceptual Closure Plan
Appendix LL	New	Impact Footprints and Effects



## CONTENTS

<b>1.0 PROJECT OFFICE AND ASSOCIATED INFRASTRUCTURE .....</b>	<b>3</b>
<b>2.0 MINE SITE AREA.....</b>	<b>6</b>
<b>3.0 ENVIRONMENTAL BASELINE STUDY.....</b>	<b>13</b>

## LIST OF FIGURES

Figure 1.1 Goliath Gold Project Office.....	3
Figure 1.2 Goliath Gold Project Office.....	3
Figure 1.3 Goliath Gold Project Office (Main Warehouse).....	4
Figure 1.4 Goliath Gold Project Warehousing Infrastructure.....	4
Figure 1.5 Goliath Gold Project Office (Main Warehouse).....	5
Figure 1.6 Goliath Gold Project Warehousing Infrastructure.....	5
Figure 2.1 Tree Nursery Irrigation Ponds (Water Intake).....	6
Figure 2.2 Deposit at Surface, Middle of the Proposed Open Pit .....	6
Figure 2.3 Diamond Drill Hole, East Section of the Proposed Open Pit .....	7
Figure 2.4 Topography of the Proposed Open Pit.....	7
Figure 2.5 Tree Nursery Road and Power Line Infrastructure .....	8
Figure 2.6 Current Equipment Storage Area and Beaver Pond Pond (Middle of Proposed Open Pit, and location of Crown Land central to development).....	8
Figure 2.7 Figure 2.6 Current Equipment Storage Area (Middle of Proposed Open Pit).....	9
Figure 2.8 Topography and Vegetation (Eastern Section of Proposed Open Pit) .....	9
Figure 2.9 Topography and Vegetation (Center Section of Proposed Open Pit).....	10
Figure 2.10 Normans Road, East of Equipment Storage Area .....	10
Figure 2.11 Power Line Infrastructure .....	11
Figure 2.12 Topography and Vegetation (Eastern Section of Proposed Open Pit) .....	11
Figure 2.13 Tailings Storage Facility Location (North of Power Lines) .....	12
Figure 3.1 Surface Water Site (SW2).....	13
Figure 3.2 Surface Water Site (JCTa).....	13
Figure 3.3 Surface Water Site (SW1).....	14
Figure 3.4 Keplyn's Bay on Wabigoon Lake.....	14
Figure 3.5 Surface Water Site (TL3).....	15
Figure 3.6 Geochemical Field Cells.....	15
Figure 3.7 Walleye.....	16
Figure 3.8 Fish Tissue Program 2012 .....	16
Figure 3.9 Pearl Dace.....	17
Figure 3.10 Black Crappie .....	17
Figure 3.11 Little Brown Bat .....	18
Figure 3.12 Garter Snake .....	18
Figure 3.13 Raccoon .....	19
Figure 3.14 Bald Eagle .....	19
Figure 3.15 Ruffed Grouse .....	20
Figure 3.16 Moose.....	20
Figure 3.17 Deer Mouse.....	21



## 1.0 PROJECT OFFICE AND ASSOCIATED INFRASTRUCTURE



Figure 1.1 Goliath Gold Project Office



Figure 1.2 Goliath Gold Project Office



Figure 1.3 Goliath Gold Project Office (Main Warehouse)



Figure 1.4 Goliath Gold Project Warehousing Infrastructure



Figure 1.5 Goliath Gold Project Office (Main Warehouse)



Figure 1.6 Goliath Gold Project Warehousing Infrastructure



## 2.0 MINE SITE AREA



Figure 2.1 Tree Nursery Irrigation Ponds (Water Intake)



Figure 2.2 Deposit at Surface, Middle of the Proposed Open Pit





Figure 2.3 Diamond Drill Hole, East Section of the Proposed Open Pit



Figure 2.4 Topography of the Proposed Open Pit



Figure 2.5 Tree Nursery Road and Power Line Infrastructure



Figure 2.6 Current Equipment Storage Area and Beaver Pond Pond (Middle of Proposed Open Pit, and location of Crown Land central to development)



Figure 2.7 Figure 2.6 Current Equipment Storage Area (Middle of Proposed Open Pit)



Figure 2.8 Topography and Vegetation (Eastern Section of Proposed Open Pit)



Figure 2.9 Topography and Vegetation (Center Section of Proposed Open Pit)



Figure 2.10 Normans Road, East of Equipment Storage Area



Figure 2.11 Power Line Infrastructure



Figure 2.12 Topography and Vegetation (Eastern Section of Proposed Open Pit)



Figure 2.13 Tailings Storage Facility Location (North of Power Lines)



### 3.0 ENVIRONMENTAL BASELINE STUDY



Figure 3.1 Surface Water Site (SW2)



Figure 3.2 Surface Water Site (JCTa)



Figure 3.3 Surface Water Site (SW1)



Figure 3.4 Keptyn's Bay on Wabigoon Lake





Figure 3.5 Surface Water Site (TL3)



Figure 3.6 Geochemical Field Cells



Figure 3.7 Walleye



Figure 3.8 Fish Tissue Program 2012



Figure 3.9 Pearl Dace



Figure 3.10 Black Crappie



Figure 3.11 Little Brown Bat



Figure 3.12 Garter Snake

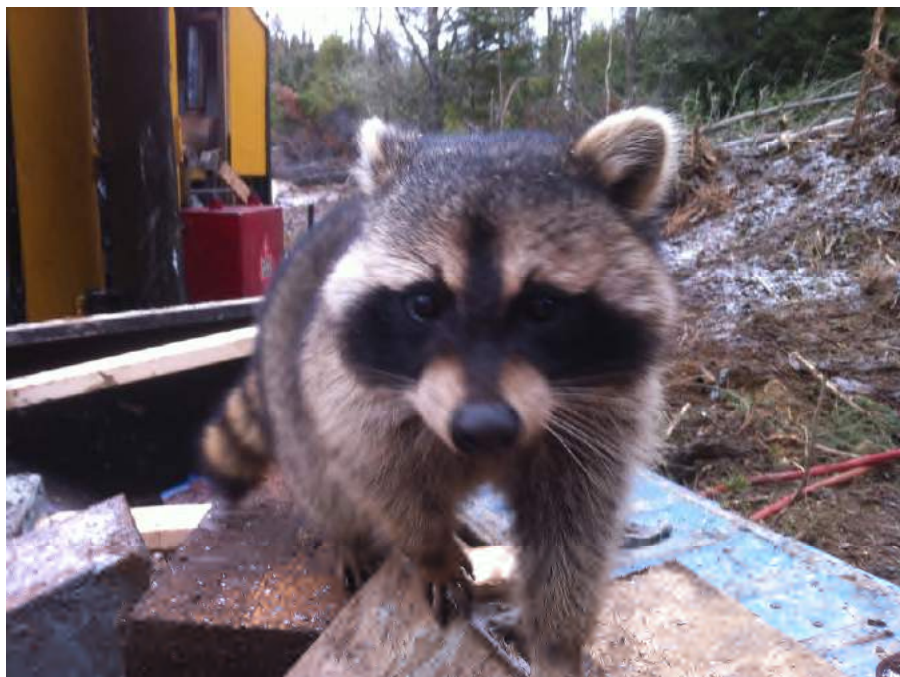


Figure 3.13 Raccoon



Figure 3.14 Bald Eagle



Figure 3.15 Ruffed Grouse



Figure 3.16 Moose



Figure 3.17 Deer Mouse